

LED

HOUSINGS

catalogue

2023 EDITION

Quality Beyond Imagination



LATTEYS INDUSTRIES LIMITED

E: info@latteysindustries.com | W: www.latteysindustries.com

Plot No. 16, Phase 1/2, GDIC Estate, Naroda, Ahmedabad-382330, Gujarat

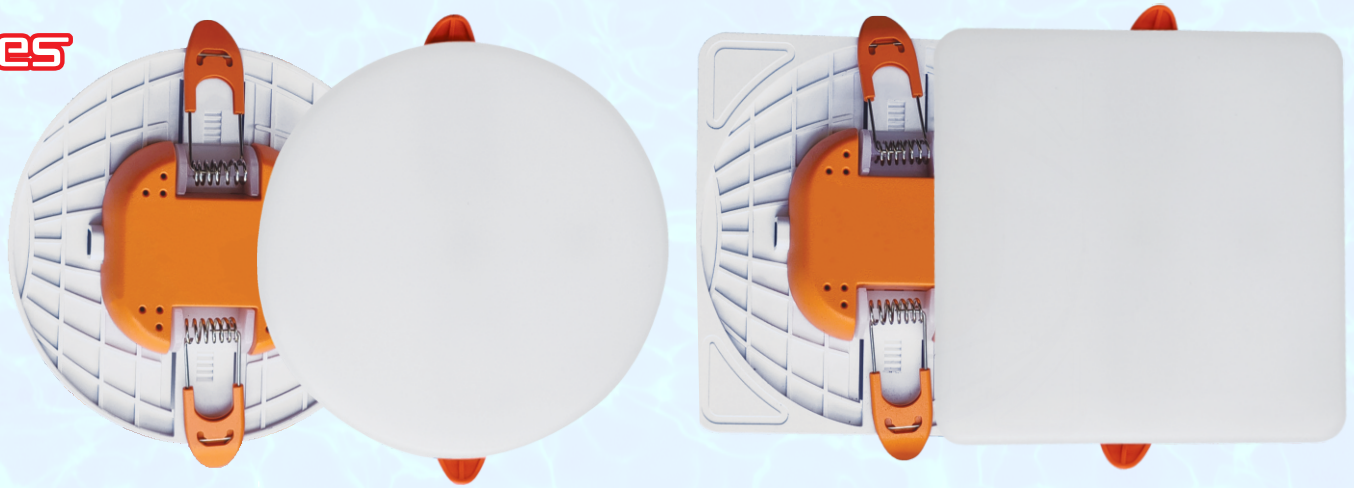


SERIES

New

ADJUSTABLE PANELS

ADJUSTABLE PANELS



APOLLO

edge-it panels

ROUND & SQUARE

DIMENSIONS

Round / Square

12w: 120x13mm

18w: 170x13mm

CUT HOLE SIZES

12w: 2.5" (Min) - 4.0" (Max)

18w: 2.5" (Min) - 6.0" (Max)



COMPLETE PRODUCT

APOLLO surface rings

CUT HOLE SIZES

12W ROUND : 4.0"

12W SQUARE : 4.0"

18W ROUND : 6.0"

18W SQUARE : 6.0"

DIMENSIONS

Round / Square

12w: 120x30mm

18w: 170x30mm

PUSH TO FIT SURFACE RINGS

BEAM SERIES *New*

cob

4W DOWNLIGHT

Housing : 70x40mm

Cut hole : 40mm



cob

12W DOWNLIGHT

Housing : 128x55mm

Cut hole : 98mm



cob

7W DOWNLIGHT

Housing : 106x47mm

Cut hole : 75mm



INTRODUCING
THE ALL NEW RANGE OF
POLY CARBONATE
LED HOUSINGS

spot light

ROUND

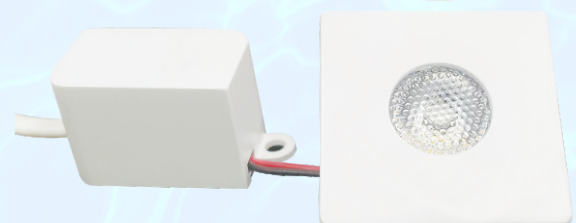
Housing : 42x14mm



spot light

SQUARE

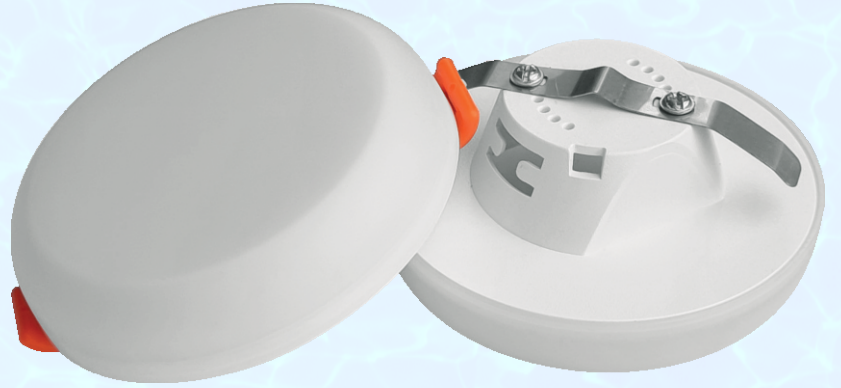
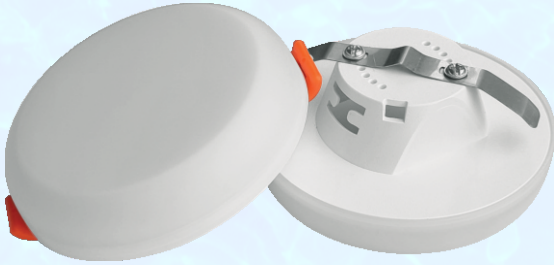
Housing : 42x14mm



SURFACE LIGHTS

New

SUITABLE FOR : JUNCTION / DEEP & CONCEALED FITTING



CRESCENT
8W downlight

Housing : 88x45mm
Cut hole : 40mm

CRESCENT
16W downlight

Housing : 110x45mm
Cut hole : 40mm



twist-on
8W
Housing : 80x50mm

New

twist-on
16W
Housing : 105x50mm



SUITABLE FOR : JUNCTION / DEEP & SURFACE FITTING

shine 8W deep surface

Housing : 85x65mm
Cut hole : 40mm



glory 8W surface

Housing : 85x40mm



SUITABLE FOR : ALL TYPE OF SURFACES & FITTINGS

shine 16W deep concealed surface



Deep Fitting

Housing : 85x65mm
Cut hole : 40mm



Concealed Fitting

Housing : 110x55mm
Cut hole : 75mm



glory 16W surface

Housing : 140x40mm



SUITABLE FOR : ALL TYPE OF SURFACES & FITTINGS

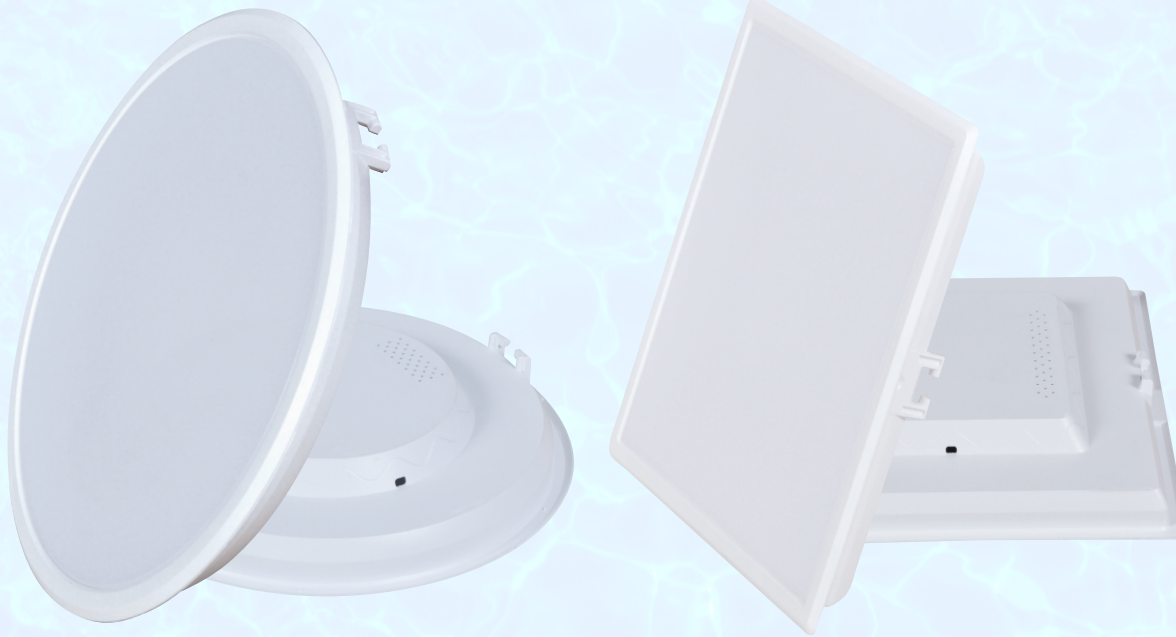


Backlit Panels

ROUND & SQUARE

CUT HOLE SIZES

3w	:	2.5"
6w	:	4.0"
9w	:	5.0"
12w	:	6.0"
18w	:	8.0"



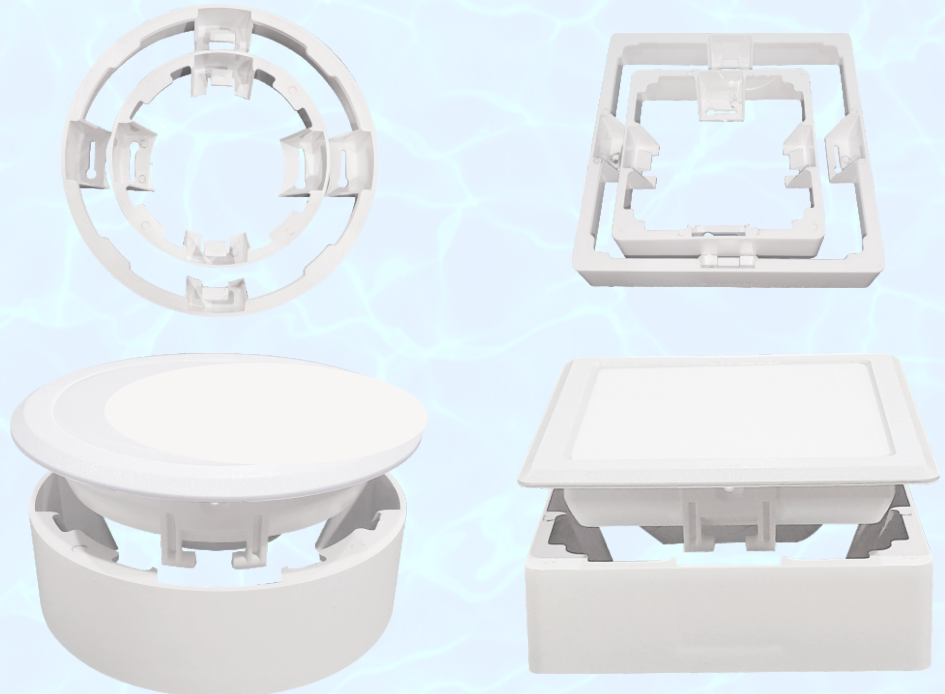
surface rings

CUT HOLE SIZES

6w	ROUND	: 4.0"
6w	SQUARE	: 4.0"
9w	ROUND	: 5.0"
9w	SQUARE	: 5.0"
12w	ROUND	: 6.0"
12w	SQUARE	: 6.0"
18w	ROUND	: 8.0"
18w	SQUARE	: 8.0"

DIMENSIONS

Round / Square	
6w	: 117x34mm
9w	: 144x34mm
12w	: 167X34mm
18w	: 220X34mm



PUSH TO FIT SURFACE RINGS



G SERIES

New

**Backlit
Panels**
ROUND & SQUARE

CUT HOLE SIZES

6w : 4.0"

12w : 6.0"

18w : 8.0"



Panel / Surface Lights



Backlit Panels

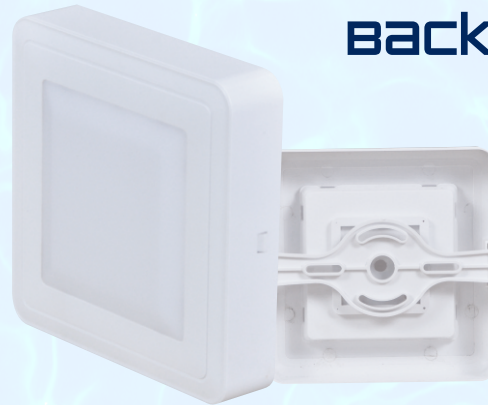
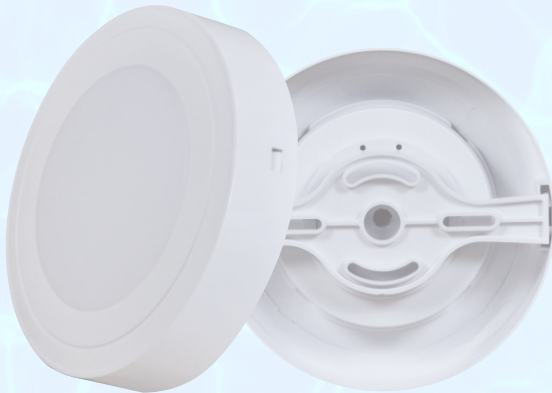
ROUND & SQUARE
Poly Carbonate

CUT HOLE SIZES

5w : 3"

10w : 4.25"

15w : 5.5"



Backlit surface

Poly Carbonate

SUITABLE FOR ALL TYPE OF
SURFACES & FITTINGS

10w/15w
ROUND & SQUARE

DEEP / JUNCTION LIGHTS

striker
5W

Housing : 69x14mm

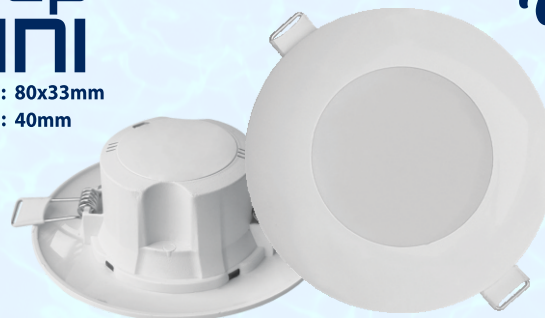
New



DEEP
MINI

Housing : 80x33mm
Cut hole : 40mm

New



SUITABLE FOR : JUNCTION / DEEP

pluto junction

Housing : 80x30mm

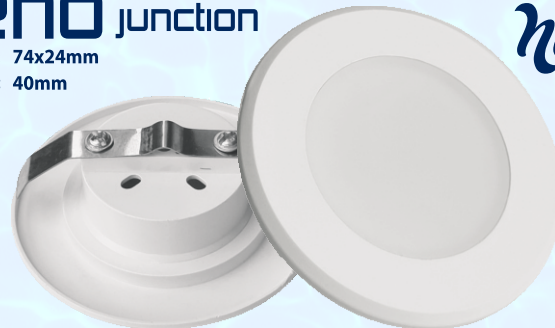
New



RENO junction

Housing : 74x24mm
Cut hole : 40mm

New



4W DEEP

Housing : 72x38mm
Cut hole : 40mm

4W shine

Housing : 72x55mm
Cut hole : 40mm



striker
full diffuser

Housing : 62x20mm

New



deep plain

Housing : 80x45mm
Cut hole : 40mm

deep
junction



3W COB

Housing : 70x34mm
Cut hole : 40mm

New



CONCEALED LIGHTS



glow 9w

Housing : 112x48mm
Cut hole : 75mm
(DROP DOWN DIFFUSER)

glare 9w

Housing : 112x65mm
Cut hole : 75mm
(PLAIN DIFFUSER)

Bright Downlight PLUS

Housing : 112x50mm
Cut hole : 75mm



sparkle

7W DOWNLIGHT

Housing : 112x55mm
Cut hole : 75mm

new



comet

7W DOWNLIGHT

Housing : 110x35mm
Cut hole : 75mm

new



Mirage downlight

Housing : 110x47mm
Cut hole : 75mm



arc

Housing : 110x50mm
Cut hole : 75mm

new





New Jolly

Housing : 105x60mm
Cut hole : 75mm



bright

Housing : 105x45mm
Cut hole : 75mm



jolly

Housing : 110x60mm
Cut hole : 75mm



Aqua

Housing : 110x60mm
Cut hole : 75mm



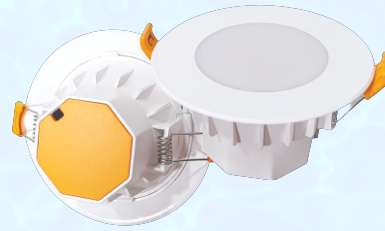
hexa

Housing : 115x72mm
Cut hole : 75mm



adore

Housing : 115x75mm
Cut hole : 80mm

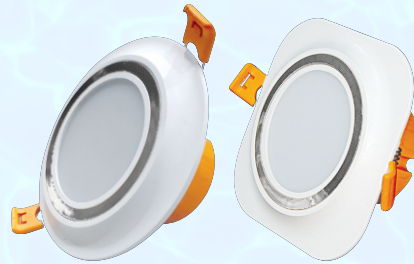


flora

ROUND & SQUARE

Housing : 105x55mm

Cut hole : 75mm



aura

ROUND & SQUARE

Housing : 110x55mm

Cut hole : 75mm

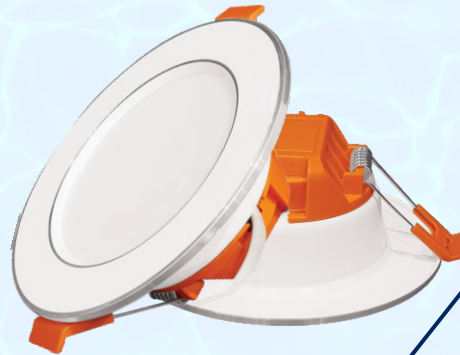


NEO

downlight

Housing : 110x45mm

Cut hole : 75mm



moon

aluminium
downlight

Housing : 110x45mm

Cut hole : 75mm

ray

aluminium
downlight

Housing : 112x50mm

Cut hole : 75mm



Aluminium Housings

Handi downlight

Housing : 115x45mm



SUITABLE FOR : JUNCTIONS | FAN BOX | CONCEALED BOX FITTINGS

Housing 170x70x46mm

Bulkhead 10w surface light



Housing :210x100x55mm

Bulkhead 20w surface light



SUITABLE FOR : INDOOR & OUTDOOR SURFACE FITTINGS

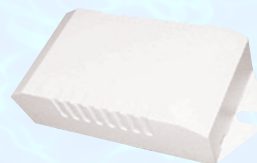
Driver Housings



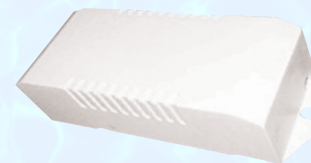
LED-D1
59x37x21 (mm)
(LxBxH)



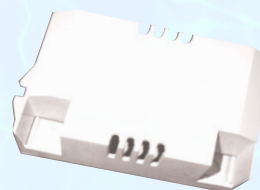
LED-D2
83x37x25 (mm)
(LxBxH)



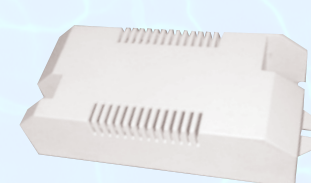
LED-DW1
53x37x21 (mm)
(LxBxH)



LED-DW2
83x37x20 (mm)
(LxBxH)



LED-D1A
60x39x23 (mm)
(LxBxH)



LED-D3
97x50x33 mm
(LxBxH)



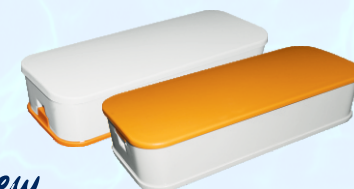
LED-DW5
57x26x20 (mm)
(LxBxH)



LED-DW6
50x25x20 (mm)
(LxBxH)



LED-DW7
50x28x17 (mm)
(LxBxH)



LED-DW8
72x28x17 (mm)
(LxBxH)

new

innovative housing
solutions for
LED
lightings



Follow us
on:

